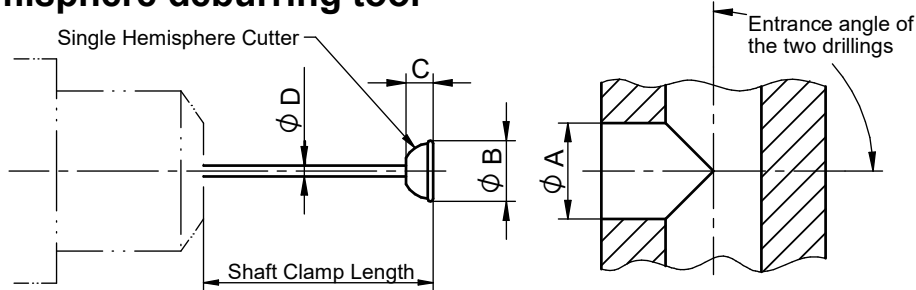


Technical specifications

ORBITOOL®

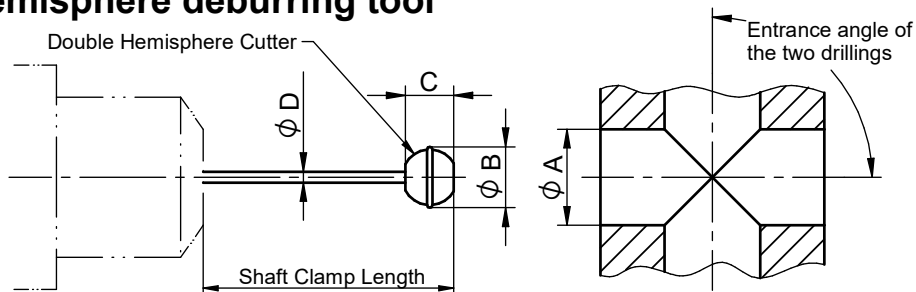
Single hemisphere deburring tool



Dimension mm / inch	Order Nummer Cutter	Approx. min. bore diameter A - vary according to entrance angle			Ø B Disk mm	C Height of head mm	Ø D Shaft mm	E Length of shaft mm
		90° mm	60° mm	45° mm				
1.14 / 0.045"	24-51710	1.3	*	*	1.14	0.8	0.38	22
1.88 / 0.074"	24-51474	2.0	*	*	1.88	1.0	0.76	60
2.38 / 3/32"	24-51400	3.2	4.5	6.2	2.7	1.8	0.76	60
3.18 / 1/8"	24-51100	4.4	6.0	8.2	3.6	2.4	1.14	100
3.97 / 5/32"	24-51500	5.5	7.5	10.2	4.4	2.7	1.55	100
4.77 / 3/16"	24-51600	6.6	9.0	12.3	5.2	3.2	1.55	100
6.35 / 1/4"	24-51200	8.8	12.0	16.4	6.9	3.9	2.39	150
9.58 / 3/8"	24-51300	13.2	18.0	24.5	10.3	5.5	2.39	150

* Please contact us for specific assistance.

Double hemisphere deburring tool



Dimension mm / inch	Order Nummer Cutter	Approx. min. bore diameter A - vary according to entrance angle			Ø B Disk mm	C Height of head mm	Ø D Shaft mm	E Length of shaft mm
		90° mm	60° mm	45° mm				
1.88 / 0.074"	24-53474	2.0	*	*	1.88	2.0	0.76	60
2.38 / 3/32"	24-53400	3.2	4.5	6.2	2.7	2.9	0.76	60
3.18 / 1/8"	24-53100	4.4	6.0	8.2	3.6	3.9	1.14	100
3.97 / 5/32"	24-53500	5.5	7.5	10.2	4.4	4.6	1.55	100
4.77 / 3/16"	24-53600	6.6	9.0	12.3	5.2	5.4	1.55	100
6.35 / 1/4"	24-53200	8.8	12.0	16.4	6.9	6.8	2.39	150
9.58 / 3/8"	24-53300	13.2	18.0	24.5	10.3	10.1	2.39	150

* Please contact us for specific assistance.



Lestoprex AG
 Kronenstrasse 11
 CH - 8735 St. Gallenkappel

Telefon +41 (0)55 284 51 51
 Telefax +41 (0)55 284 51 53

Mail mail@lestoprex.ch
 Internet www.lestoprex.ch